



TRACS - DATA REPORTING & ANALYSIS SOFTWARE

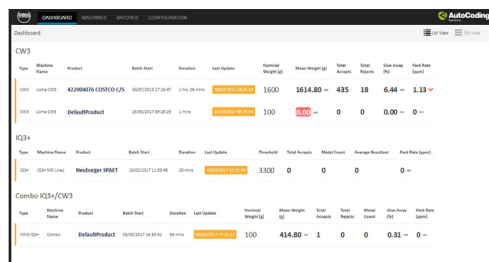
Designed for Food & Packaging Industries

Software

TRACS (*T*rending, *R*eporting, *A*nalysis, *C*apture) software runs over a network and captures data from connected machines for analysis and reporting from a remote computer. Developed in partnership with AutoCoding Systems, TRACS displays live and historical batch data for all production runs and is designed to work with LOMA's Metal Detectors, Checkweighing, X-ray Inspection and Combination Systems.

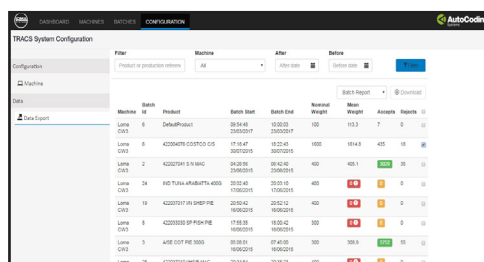
Product Highlights

- Provides trend analysis of key measurements for each batch, such as give away or metal count
- Live dashboard information allowing quick & easy overview of machine status
- Demonstrates compliance whilst minimizing paperwork
- Helps improve overall equipment efficiency
- Printable batch summary details
- Secure data storage



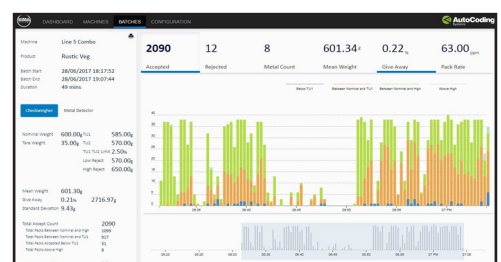
Dashboard provides live machine status

Status of all inspection machines connected to TRACS configured in either a list or tile view.



Central data storage for reporting and analysis

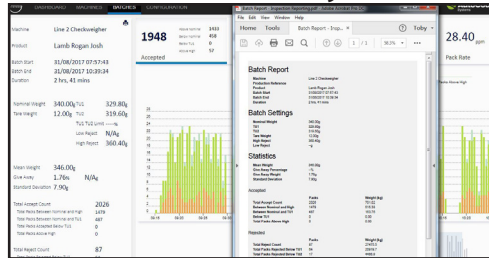
TRACS stores data centrally and is accessible via a secure network link with a web browser.



Graphical User Interface for Easy Trend Analysis

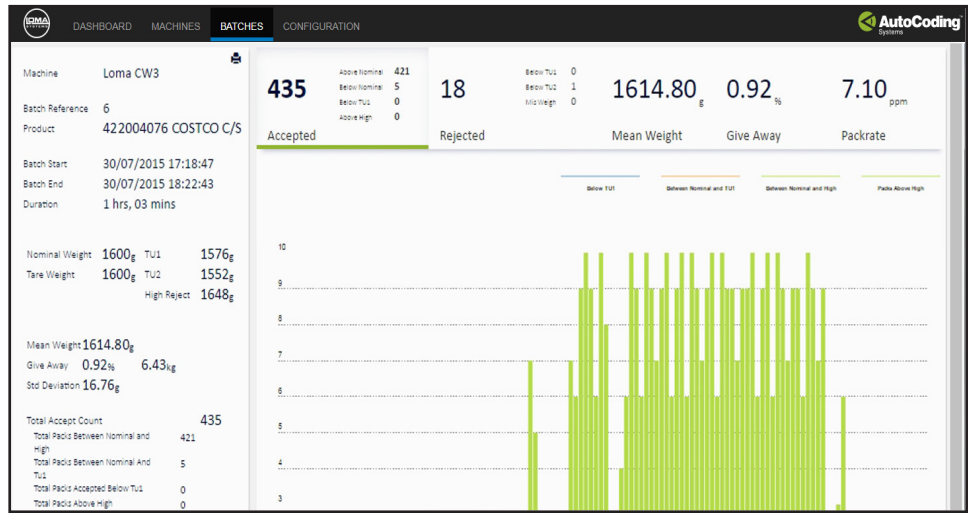
Data is presented in a graphical form for each batch, depending on the type of machine.

PDF Batch Summary



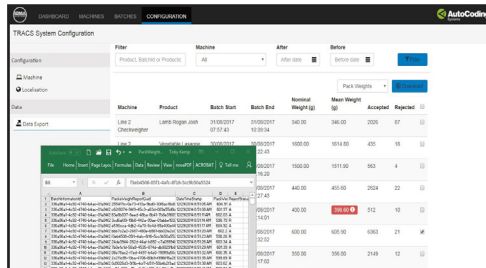
Batch summary details can be exported as PDF for demonstrating compliance.

BATCH CARD



Detail batch reporting and graphical representation, showing details relevant to each type of machine. The batch card provides simple and powerful visualisation whilst providing key metrics, dates and times taken directly from LOMA equipment. Printable reports are available containing key batch information.

CSV DATA EXPORT

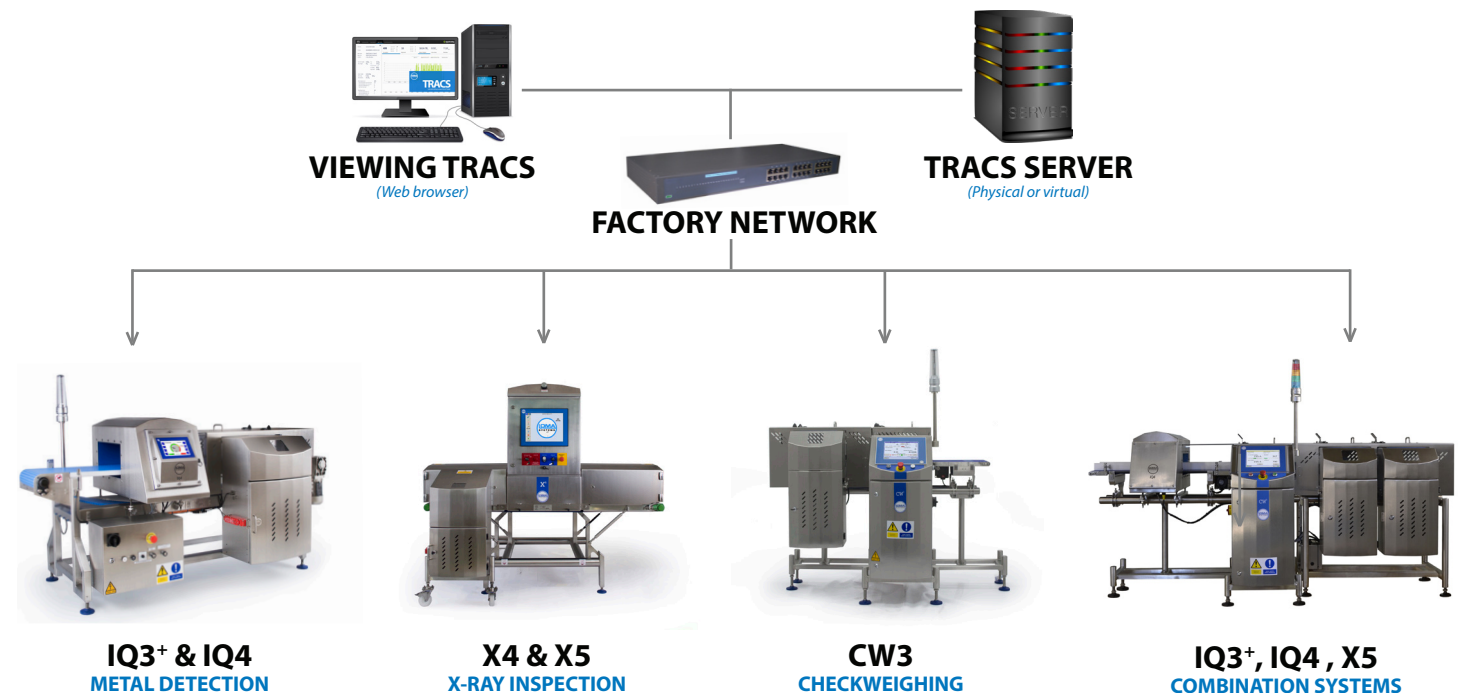


CSV data export functionality includes batch data as well as individual pack weights.

Technical Requirements

Browser Requirement	Windows IE10 or later, Firefox or Google Chrome (preferred)
Network IP Address Assignment	Loma machines require a fixed IP address (not DHCP)
Database Storage Technology	MongoDB
Machine Types Supported	IQ3+, IQ4, CW3, CW3 Combo, X4 X-ray, X5 X-ray
Units of Measurement Supported	Metric, Imperial
Reporting and Data Export Features	PDF Batch Report, CSV Data Export (Batch Data, Individual Pack Weights)
Installation Requirements	Remote access to server required by Autocoding
Software Language	English & German

A Typical TRACS setup



An ITW Company

www.loma.com

Tel: +44(0)1252 893300 (UK) | +1-800-872-LOMA (North America)

Metal Detection | Checkweighing | X-Ray Inspection

In association with



Loma Systems is a registered trademark of Illinois Tool Works Inc. (ITW). Other names, logos, icons and marks identifying our products and services referenced herein are trademarks of ITW and may not be used without the prior written permission of ITW. Other product and company names listed are trademarks or trade names of their respective companies. Copyright © 2018 Illinois Tool Works Inc. All rights reserved. All of the specifications shown in this document are subject to change without notice.

TRAC_89320190