



Bolphane® BE

Centerfolded standard multipurpose polyolefin shrink film

- **Versatility.**
- **Optimized pre-perforation for controlled shrinkage and easier set-up.**
- **High cohesion strength.**
- **Good optical properties.**

APPLICATIONS

→ Bolphane® BE is the standard film covering a broad spectrum of end-uses where a centerfolded film is required.



→ Its cohesion strength makes it a good candidate for multipacking applications.

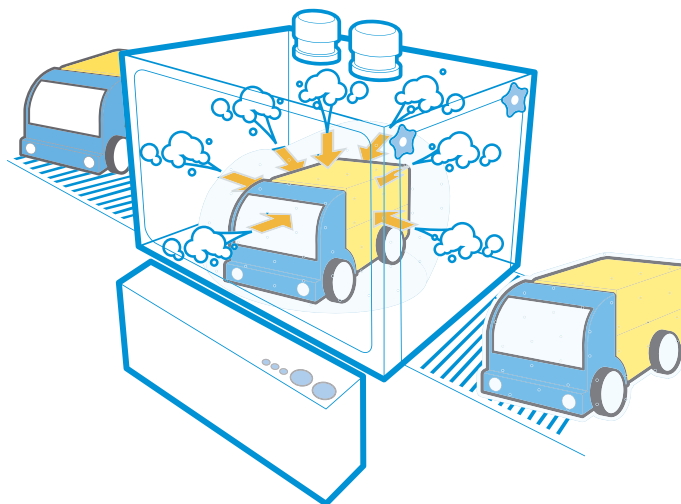


Bolloré

Bolphane® BE

PRE-PERFORATION

- The optimized pre-perforation of Bolphane® BE allows a controlled escape of air during the shrink stage and makes the set-up easier : no more need for perforation on the shrinkwrapper.



TECHNICAL FEATURES

PROPERTIES	BE 13	BE 15	BE 19	BE 25
Gloss (85° angle) in %	118			
Haze (%)	2,5			3
Shrinkage (%)	at 93°C			
	at 120°C			
Seal strength (N/30 mm)	at 160°C			
	at 190°C			
Water vapour permeability (g/m ² /24hr at 35°C 95% RH)	16	14	11	8
O ² permeability (cm ³ /m ² 24hr bar)	8 500	7 000	5 500	4 000
Length of the roll (m) Centerfolded BE-C	1 550	1 335	1 070	800
Internal diameter (mm)	76,2			
External diameter (mm)	245			

PRESENTATION

- Bolphane® BE is available only centerfolded. See our Product Availability Chart.

○ The technical features of the products defined herein are given as typical values. They are guides for the use of the quoted films values and are not for use as limiting specification. Users have to check-up that they are suitable with all the applications as performance may vary with processing conditions. Properties and performance are subject to change and BOLLORÉ keeps the right to modify the definition and properties of its products without prior notice.

Bolloré