



X⁴ X-ray Inspection Systems

www.loma.com

Versatile, proven X-ray detection for the food and packaging industries



- **Versatile** Models and reject systems to suit a wide range of packaged product
- **Easy to use** Intuitive full colour touch-screen
- **Sensitive** Auto calibration, which requires no programming and maximizes performance
- **Fast** Belt speeds up to 70 m/min with optimum performance
- **Reliable** Heavy duty conveyor components, built for 24/7 operation



Metal Detection

X-ray Inspection

Checkweighers

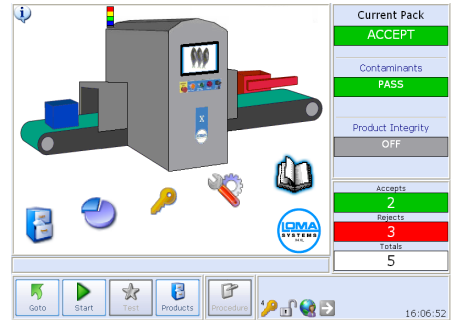
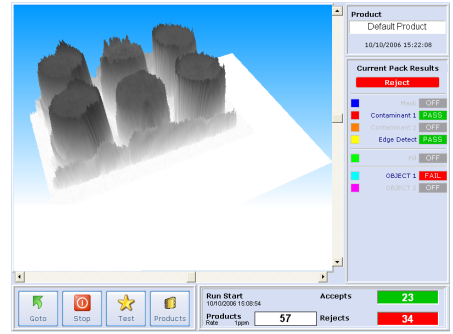
Data Capture

Designed to Survive



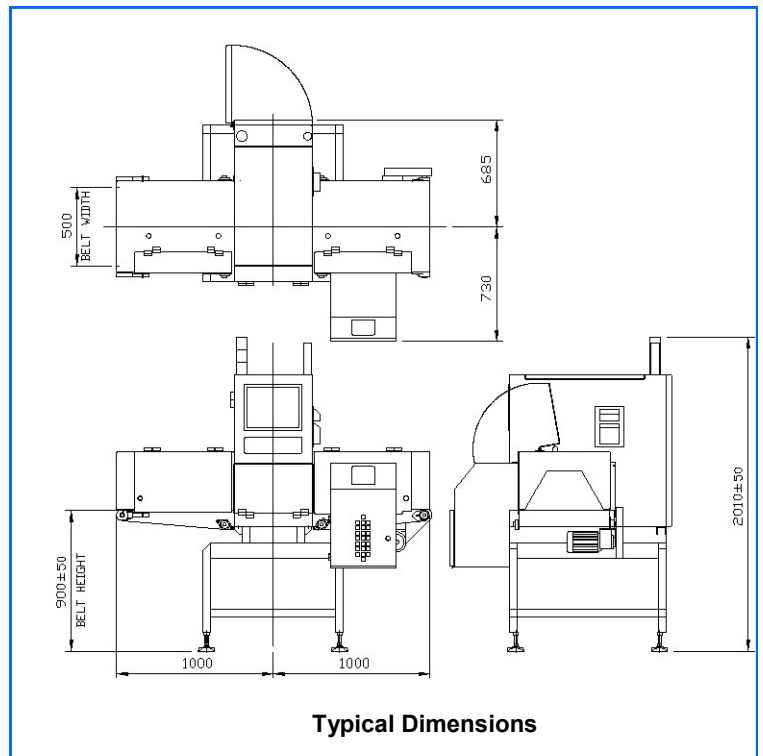
X-ray Inspection Systems

- Finish: 304 stainless steel with brushed finish
- Typical Line Height: 900mm ± 50mm
- System Length: 2000mm
- Belt Width: 300/500/600mm
- Maximum Weight: 25kgs
- Supply Voltages: 230/1ph/50Hz N+E or 110/1ph/60Hz N+E
- Air Supply: 5 to 8 bar
- Reject Options: Air Blast single or twin, Pusher others to order
- Environment: IP 55
- Belt Type: Flat (food quality) belt
- Standard Inclusions: Quick release belt, Height adjustable feet, Mass Measurement, Missing product, Shape recognition, Image and report archiving, Hinged interlocked covers, Variable speed
- Options: Reject confirmation, Bin full sensing, Reject bin, Survey meter, Remote diagnostics, Lockable wheels, LomaEnet, Modem, IP66 Washdown



Technical Specification

- Industrial Grade PC with modem, Ethernet and front access USB port
- Embedded Windows XP operating system
- Digitally controlled WASC (Wide Angle, Self Cooled) high performance X-ray tank. (Tube life estimated at 7 to 10 years)
- Unique USB high speed, high stability, detector array with 0.8mm diode pitch
- Computer vision system utilising image processing and morphological techniques
- Pass Key protected set-up
- USB Report and image archiving
- Full diagnostic and system health monitoring with date and time stamp archiving, including remote support tools
- Usage monitoring with planned maintenance prompts
- Modular system with speed digital communications between major components



QPM Ltd., Unit 12, Robinhood Business Park, Robinhood Road, Dublin 22, Ireland
Tel: +353 (0) 1 450 2421, Fax: +353 (0) 1 450 2311,
Email: mnevin@qpm.ie Web: www.qpm.ie



Designed to Survive