



# X<sup>4</sup> Bulk X-ray Inspection Systems

[www.loma.com](http://www.loma.com)

Versatile, proven X-ray detection for the food and packaging industries



- **Versatile** Models and reject systems to suit a wide range of loose bulk flow product
- **Easy to use** Intuitive full colour touch-screen
- **Sensitive** Auto calibration, which requires no programming and maximizes performance
- **Fast** Typical throughput in excess of 10T/hr without loss in performance
- **Reliable** Heavy duty conveyor components, built for 24/7 operation



Metal Detection

X-ray Inspection

Checkweighers

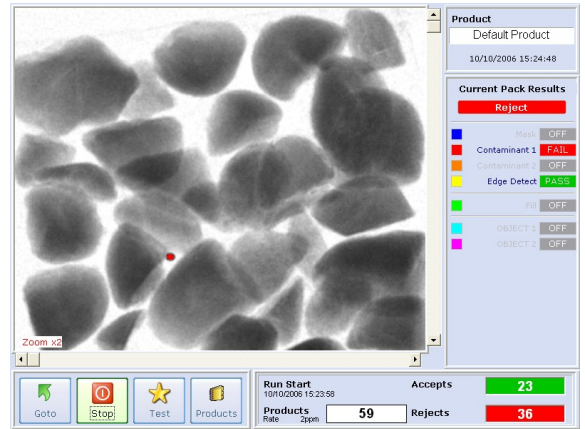
Data Capture

**Designed to Survive**



# X-ray Inspection Systems

Finish:	304 stainless steel with brushed finish
Typical Line Height:	900mm ± 50mm
Typical System Length:	2500mm
Belt Width:	300/500/600mm
Supply Voltages:	230/1ph/50Hz N+E or 110/1ph/60Hz N+E
Air Supply:	5 to 8 bar
Reject Options:	Single or Multilane lift or drop flap
Environment:	IP 55
Belt Type:	Flat (food quality) belt
Standard Inclusions:	Quick release belt, Height adjustable feet, Image and report archiving, Hinged interlocked covers, Variable speed
Options:	Reject confirmation, Bin full sensing, Reject bin, Survey meter, Remote diagnostics, Lockable wheels, LomaEnet, Modem, Washdown



## Technical Specification

Industrial Grade PC with modem, Ethernet and front access USB port

Embedded Windows XP operating system

Digitally controlled WASC (Wide Angle, Self Cooled) high performance X-ray tank. (Tube life estimated at 7 to 10 years)

Unique USB high speed, high stability, detector array with 0.8mm diode pitch

Computer vision system utilising image processing and morphological techniques

Pass Key protected set-up

USB Report and image archiving

Full diagnostic and system health monitoring with date and time stamp archiving, including remote support tools

Usage monitoring with planned maintenance prompts

Modular system with speed digital communications between major components

QPM Ltd., Unit 12, Robinhood Business Park, Robinhood Road, Dublin 22, Ireland  
Tel: +353 (0) 1 450 2421, Fax: +353 (0) 1 450 2311,  
Email: mnevin@qpm.ie Web: www.qpm.ie



## Designed to Survive