



# X<sup>4</sup> 800 XL X-ray Inspection

[www.loma.com](http://www.loma.com)

Versatile, proven X-ray detection for the food and packaging industries



- **Versatile** Designed for inspection of large products, including Euro crates and meat boxes
- **Easy to use** Intuitive full colour touch-screen
- **Sanitized** Fully draining with easy wash through conveyor
- **Fast** Belt speeds in excess of 40 m/min without loss in performance
- **Reliable** Heavy duty conveyor components, built for 24/7 operation and harsh wash down



Metal Detection

X-ray Inspection

Checkweighers

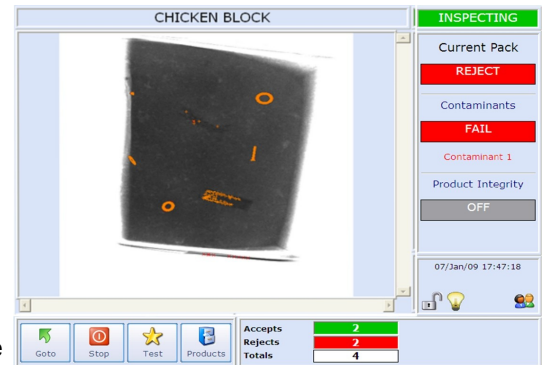
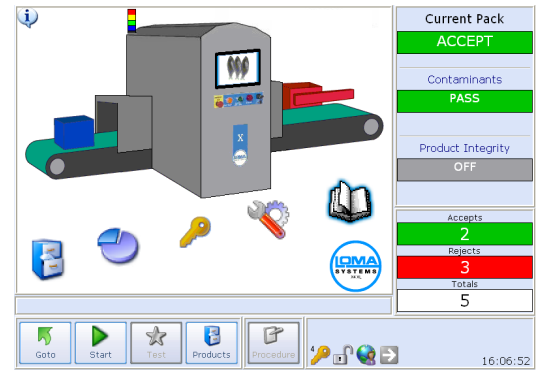
Data Capture

**Designed to Survive**



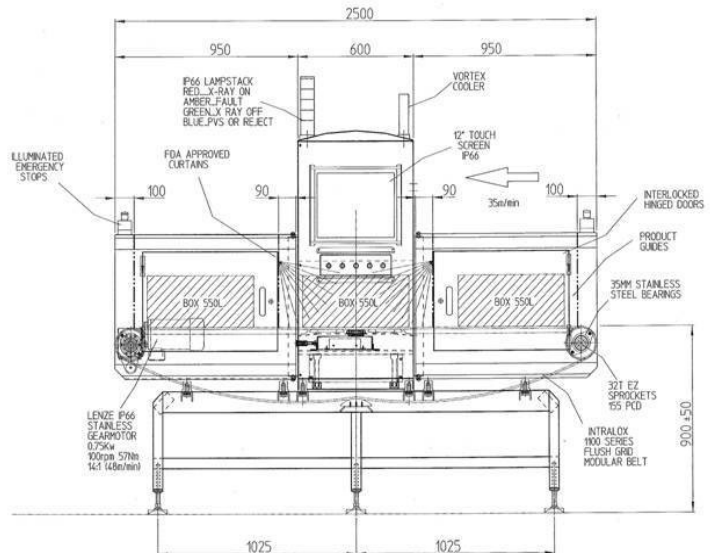
# X-ray Inspection Systems

- Finish: 304 stainless steel with brushed finish
- Typical Line Height: 900mm ± 50mm
- System Length: 2500mm
- Belt Width: 800mm
- Maximum Weight: 100kgs
- Supply Voltages: 230/1ph/50Hz N+E or 110/1ph/60Hz N+E
- Air Supply: 5 - 8 bar
- Reject Options: Signal only
- Environment: IP 66
- Belt Type: Intralox (food quality) belt
- Standard Inclusions: Height adjustable feet, Mass Measurement, Missing product, Shape recognition, Image and report archiving, Hinged interlocked covers, Variable speed
- Options: Survey meter, Remote diagnostics, LomaEnet, NAS Image data and image archiving, Inline code selection solution to enable discrete inspection of mixed product batches.



## Technical Specification

- Industrial Grade PC, Ethernet and front access USB port
- Digitally controlled WASC (Wide Angle, Self Cooled) high performance X-ray tank (long life cycle)
- Unique USB high speed, high stability, detector array with 0.8mm diode pitch
- Computer vision system utilising image processing and morphological techniques
- Pass Key protected set-up and user access levels
- Embedded Windows XP operating system
- USB Report and image archiving
- Full diagnostic and system health monitoring with date and time stamp archiving, including remote support tools
- Usage monitoring with planned maintenance prompts.
- Modular system with speed digital communications between major components



QPM Ltd., Unit 12, Robinhood Business Park, Robinhood Road, Dublin 22, Ireland  
 Tel: +353 (0) 1 450 2421, Fax: +353 (0) 1 450 2311,  
 Email: mnevin@qpm.ie Web: www.qpm.ie



Designed to Survive