



## IQ<sup>3+</sup> Metal Detector Conveyors

[www.loma.com](http://www.loma.com)

Adaptable and tough variable frequency metal detection systems for the food, and packaging industries



- **Adaptable** True variable frequency detection adapts to new product and packaging in seconds
- **Easy to use** Icon driven, multi-lingual full colour graphical touch screen
- **Stable** Unique case and coil geometry delivers unsurpassed levels of immunity
- **Flexible** Multiple product memories for rapid product change over and data storage
- **Tough** IP69K search head environmental protection



Metal Detection

X-ray Inspection

Checkweighers

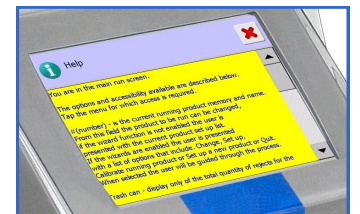
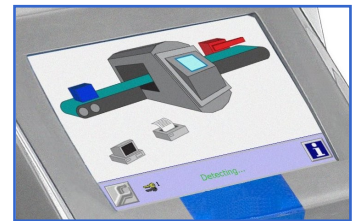
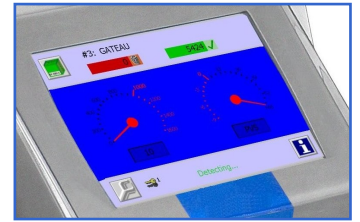
Data Capture

# Designed to Survive



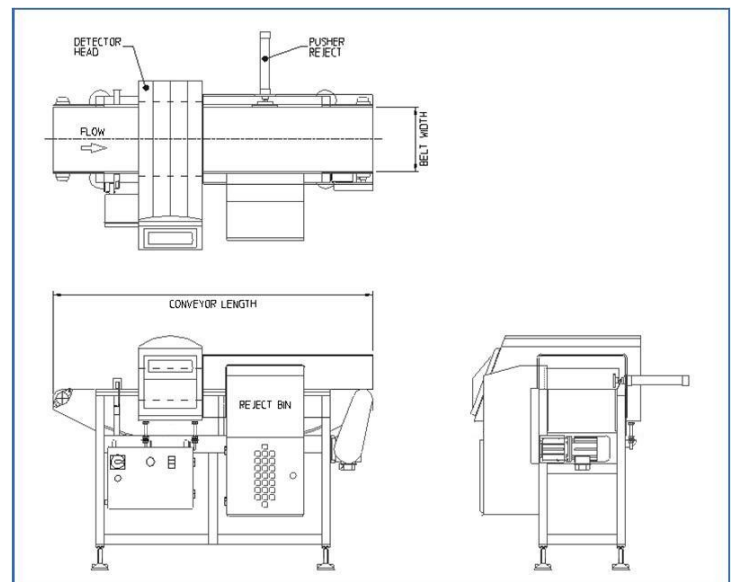
# Metal Detector Conveyors

Finish:	304 stainless steel with brushed finish			
Standard Line Height:	Feet:	750mm to 1000mm (50mm increments)		
	Wheels:	850mm to 1100mm (50mm increments)		
System Lengths:	1100 - 3000mm	1400 - 3000mm	1700 - 3000mm	
	≤100mm	≤250mm	≤350mm	
	Aperture	Aperture	Aperture	
Standard Belt Widths:	300mm	400mm	500mm	600mm
Maximum Weights:	Flat PU Belt 25kg on the belt, Modular Belt 25kg on the belt			
Typical Belt Speed:	Up to 90 m/min			
Supply Voltages:	220/230V 1ph N+E, 380/415V 3ph N+E			
Air Supply:	5 to 8 bar			
Reject Types:	Stop on detect	<60kg		
	Air blast	<1kg		
	Pusher	<10kg		
	Carriage retract band	<5kg		
Environmental Protection:	Search Head IP 69K			
Belt Type:	Flat (food quality) belt or Modular Belt			
Covers:	Stainless Steel			
Options:	Beacon stanchion	Reject confirm		
	Bin full	LomaEnet		
	Serial link	PVS (Performance Validation System) Beacon,		
	Makrolon covers			



## Technical Specification

- Unique clam-shell design case and coil geometry
- Bifurcated and totally uniform product screen
- Upgradeable metal detector controls
- True variable frequency, standard operating range from 31 to 882KHz
- Performance Validation System (PVS) to aid HACCP compliance
- Various communication options to suit plant integration protocols
- 32-bit digital signal processing for enhanced contaminant detection
- Standard apertures on rapid delivery
- Extensive on board reporting facilities meaning HACCP and retailer compliant, Ethernet and OPC compatible
- Data and product backed up and stored via USB



QPM Ltd., Unit 12, Robinhood Business Park, Robinhood Road, Dublin 22, Ireland

Tel: +353 (0) 1 450 2421, Fax: +353 (0) 1 450 2311,

Email: mnevin@qpm.ie Web: www.qpm.ie



## Designed to Survive